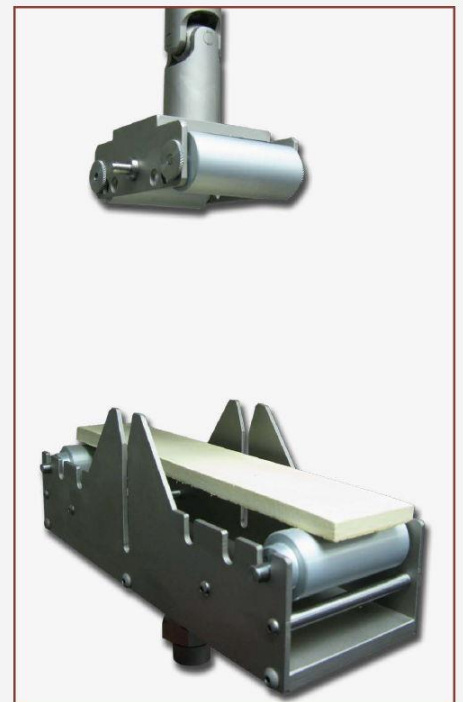
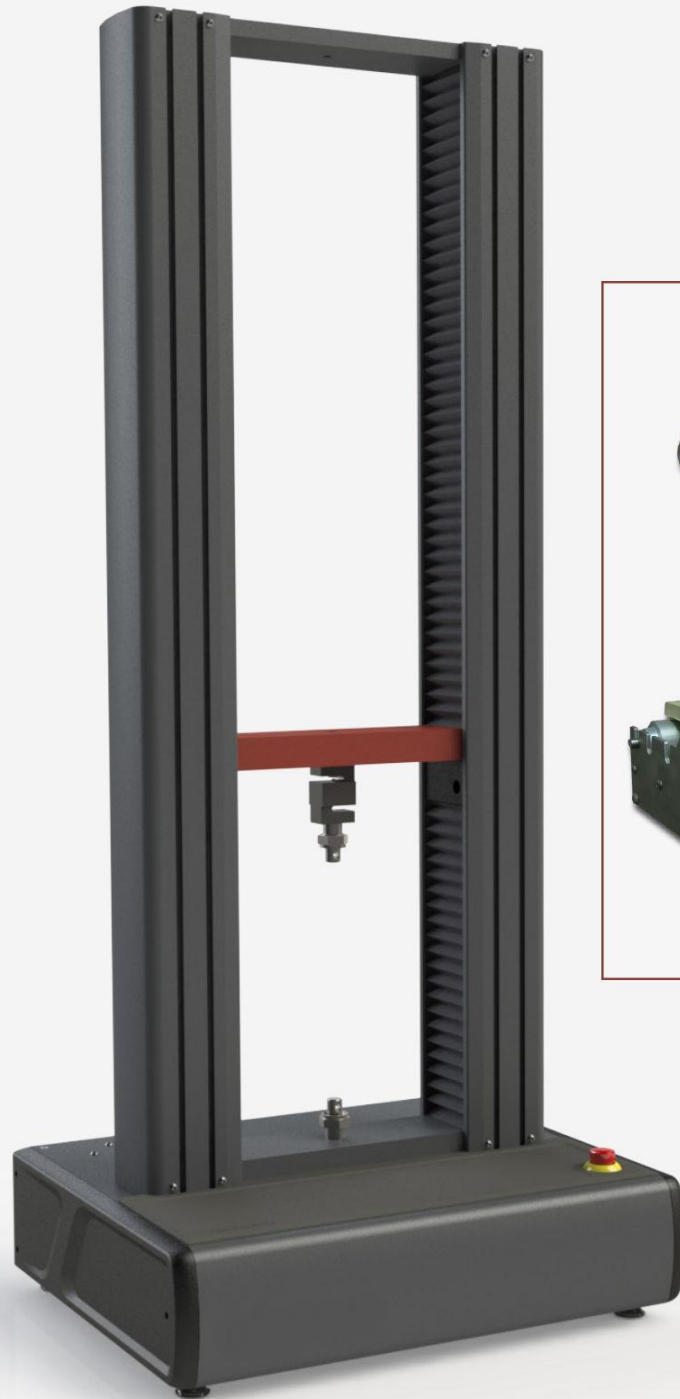


# GRC Testing Equipment

## Flexural Strength Test



**POWER-SPRAYS**

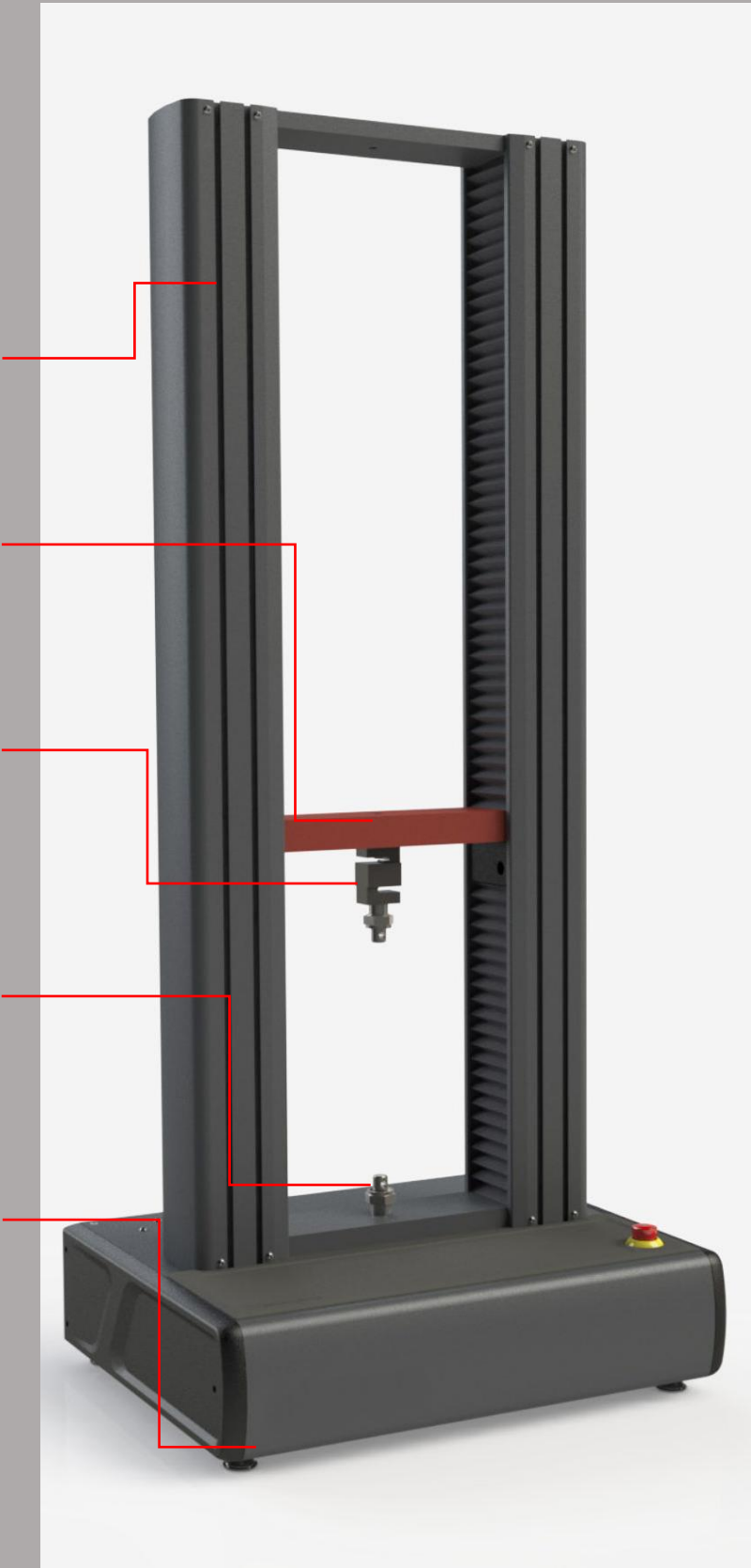
High stiffness loading frames

Precision crosshead control

High resolution 5kN load cell (10kN and 20kN also available)

Wide range of grips and fixtures available  
(GRCBend 4-point fixture supplied as standard)

Small footprint design

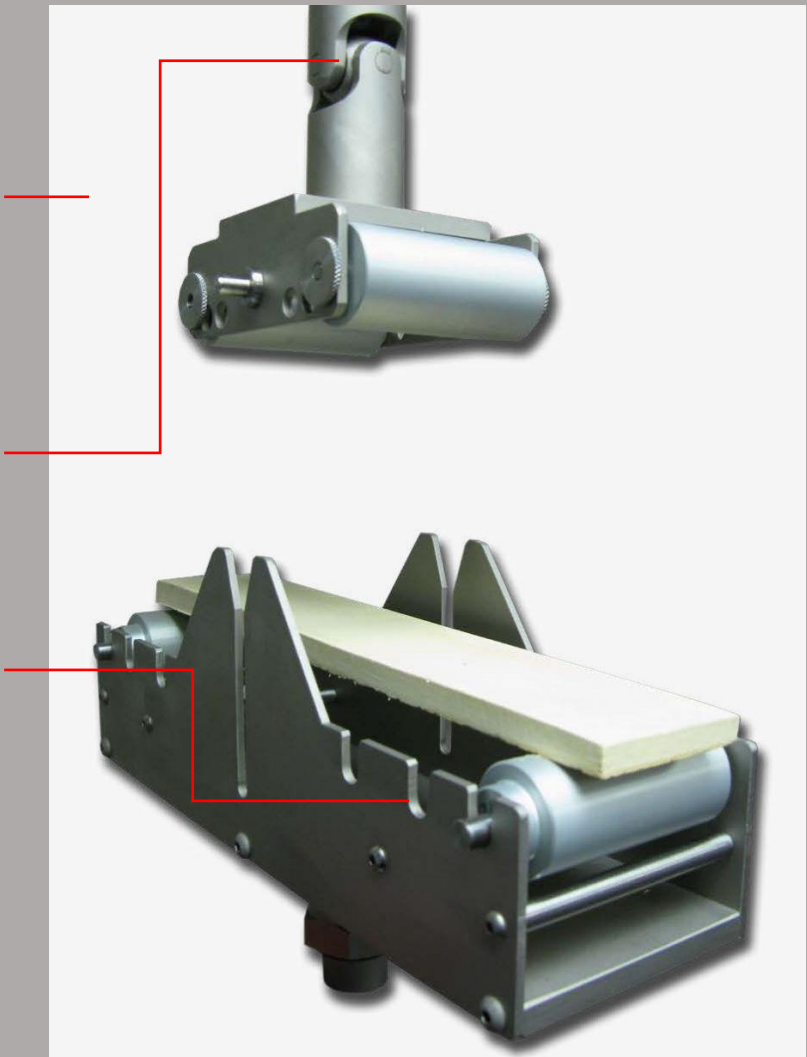


Adjustable 4-point fixture for GRC (Glassfibre Reinforced Concrete) supplied as standard

Rotating ball joint to ensure even distribution of load

Major spans of 135, 200, 250mm

Complies with EN 1170-5 and GRCA MOT Part 3

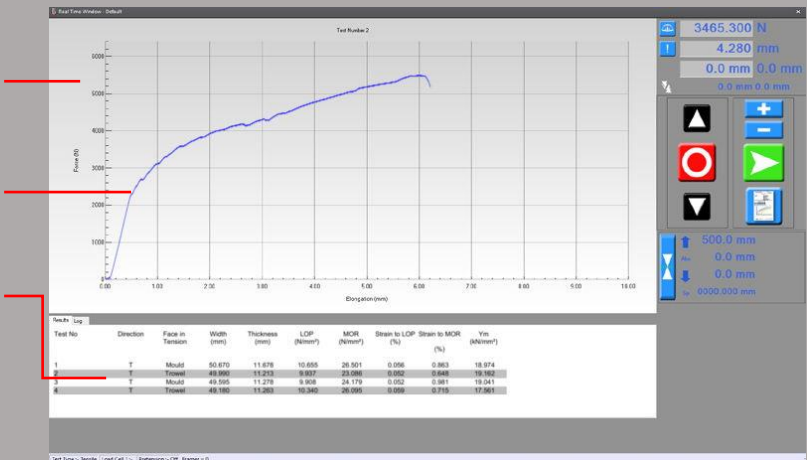


Easy to use winTest Analysis software included, pre-programmed with GRC test parameters (EN 1170-5, GRCA MOT Part 3)

Real time test data displayed

Results, including LOP, MOR and Young's Modulus, calculated automatically

Remote Connection included to check calibration and status of machine



The 4-point flexural test is the most important test for GRC, to verify the strength of the material. The dual-column, bench-mounted Testing Machine with full computer control and precision AC servo drive system is ideal for efficient testing of GRC coupons.

The Testing Machine features automatic recognition of load cells, with an instant calibration check facility, a crosshead guidance system providing precise alignment and smooth running, as well as overload, overtravel and impact protection.

The included GRCBend 4-point fixture complies with all international standards, including EN 1170-5 and GRCA Methods of Testing Part 3, with adjustable minor and major spans. It includes a rotating ball joint to ensure an even load distribution. Other test fixtures are available on request.

WinTest Analysis software is included; this easy to use, highly configurable software comes pre-programmed with a GRC test procedure. It also features customisable test calculations, user-defined machine control routines, and statistics summaries for each test report. Test reports are fully customisable, including job/client references, cast date, coupon references etc. Your company logo can be displayed on the header, and the report can be printed, or exported to pdf, Excel, Word or Access. A remote connection function is also included for diagnostics.

### Specifications

<b>Force Capacity</b>	5kN standard (10kN and 20kN available)
<b>Accuracy</b>	Better than +/- 0.5% of reading down to 1/1000 <sup>th</sup> of load cell capacity
<b>Minimum Speed</b>	0.00001mm/min
<b>Maximum Speed</b>	2000mm/min
<b>Weight</b>	110kg (5kN model)
<b>Dimensions</b>	690mm wide x 530mm deep x 1582mm high
<b>Electricity Supply</b>	230V, single phase 50/60Hz
<b>GRC Fixture Major Span</b>	135mm, 200mm, 250mm (complies with EN 1170-5, GRCA MOT Part 3)
<b>GRC Fixture Minor Span</b>	45mm, 66.7mm, 83.3mm (complies with EN 1170-5, GRCA MOT Part 3)
<b>System Requirements</b>	PC running Windows 7, 8 or 10 (32 or 64 bit) with CD/DVD drive 1 Free Ethernet connection (or USB with included adaptor) Broadband internet connection required for remote connection

### Why Buy from Power-Sprays?

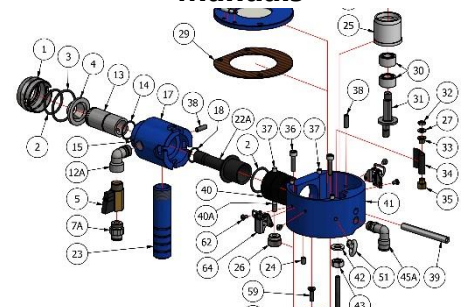
#### Support



#### Experience



#### Comprehensive Technical Manuals



#### Power-Sprays Ltd

Avonmouth Way, Bristol, BS11 9YA, UK

Tel: +44 (0)117 9820067 Fax: +44 (0)117 9820060

Email: [info@power-sprays.co.uk](mailto:info@power-sprays.co.uk) Web: [www.power-sprays.com](http://www.power-sprays.com)

